



Special Events, Groups & Meetings

The King Kamehameha Golf Club is located in Waikapu, the heart of Maui. This central location makes it the ideal meeting place for those to gather from all over the island. Our affordable rates, excellent service and amazing venues are what make us the premier setting to host your most important Event, Conference, and/or Convention. Our venues are furnished to make an indelible impression and strong impact on your guests. It is our commitment to care for each detail. Your satisfaction is our priority.

Waikapu Ballroom



Capacity: 350

Minimum of \$5,000 in Food or Room Charges

Special: Monday – Thursday Daytime Events that end before 5pm: Minimum of \$3,000 in Food or Room Charges

Grand is nothing short of a word when you step through the double stained glass doors of The King Kamehameha Golf Club. Suddenly you are transported into a world of opulence and luxury. The Waikapu Ballroom offers expansive views of the course, with panoramic views from Maui's North Shore to Ma'alaea Bay and beyond. This majestic ballroom can accommodate up to 350 guests.

Ho'oheno Room



Capacity 100

Day Event: Minimum of \$1,200 in Food or Room Charges

Eventing Event: Minimum of \$2,700 in Food or Room Charges

This domed semicircle room portrays the true architectural genius of Frank Lloyd Wright. The natural light shines through the 180 degrees of windows. It has perfect views of Haleakala, the south shores and the beautifully sculpted slopes of Mauna Kahalawai.

Hanohano Room



Capacity 30

Day Event: Minimum of \$500 in Food or Room Charges for up to 4 hours
Or \$125 per hour

Evening Event: \$250 per hour with Two Hour Minimum + \$1,000
Minimum on Food Charges

This intimate setting includes a fireplace and pure privacy. There are no interruptions during your important event in the Hanohano Room. Its circular windows overlook the 18th hole, the north shore of Maui, Haleakala, and the south shore of Maui.

Mana'o Pono Room



Capacity: 50

Day Event: Minimum of \$500 in Food or Room Charges for up to 4 hours
Or \$125 per hour

Evening Event: \$250 per hour with Two Hour Minimum + \$1,000
Minimum on Food Charges

The large mahogany table is adorned with eleven plush leather V.I.P. chairs. This Executive Board Room can be converted to fit your special event.

Photo Shoot Only

Our perfectly manicured grounds and amazing view makes this location desirable for photos. A non-event photo fee is \$375 with a one hour maximum. Appointment must be made so that the photo shoot does not conflict with scheduled events.

Weddings Ceremonies

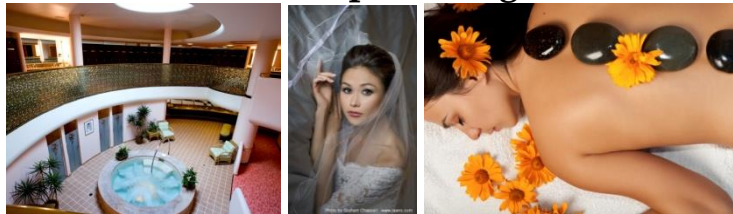
Sitting on the beautiful sculpted slopes of Mauna Kahalawai, The King Kamehameha Golf Club offers amazing panoramic views of Haleakala and both the North and South Shores of Maui. Enjoy the amazing views, award winning cuisine and spectacular service. Our properties are perfectly manicured and designed to give every event a feeling of intimacy and prominence.

The Bridal Room



A wedding at The King Kamehameha Golf Club allows the bride to come in two hours prior to the ceremony start time. A room is given to the bride to put her dress on, touch up her make-up, and relax until it is time for her to walk down the aisle.

Bridal Spa Package



The Bridal Package includes the following services in our Exclusive Members' Locker Room:

- Total clubhouse access time will be approximately four (4) hours and is restricted to the bride and one female guest
 - 50 minute massage for only the bride
 - Lunch for bride and one guest
 - Hair and make-up for the bride only: Wedding day session, Bridal hair-design, Fresh dendrobian orchids (if desired), placement of veil & or any other hair accessories. Personalized make-up session, camera ready, false lash application (if desired), touch-up powder for later.
- \$550**

Additional options are available:

- Massage for guest \$108
- Hair and make-up for guest for \$200
- Upgrade to an 80 minute massage is an additional \$36
- Golf for the Groom for \$125. May bring up to three guests for the same rate, space availability basis.

Kahalawai Terrace



Capacity: 150

Includes up to 40 White Padded Chairs

In Conjunction with Reception \$750

Ceremony Only \$975

Kahalawai Terrace is one of our beloved outdoor ceremony locations. It features the most spectacular views, as far as the eye can see. You'll feel as though you're on top of the world. Its private setting, overlooking Haleakala and both the north and south shores, makes it the perfect place to join in matrimony.

Hoapili Gardens



Capacity: 20

Includes up to 12 White Padded Chairs

In Conjunction with Reception \$350

Ceremony Only \$500

The Hoapili Gardens is our intimate ceremony location. The gardens are perfectly manicured with colourful tropical foliage surrounding the running waters. As the bride walks down the aisle, she crosses a bridge over the running stream. The nuptials are recited above a waterfall that flows into a koi pond. 180 degrees of water, lush tropical foliage, and a view of Haleakala is what makes Hoapili Gardens the perfect tropical ceremony site.

Ho'oheno Room



Capacity: 100

Includes up to 60 Chairs

In Conjunction with Reception \$750

Ceremony Only \$975

Ho'oheno means "to cherish" in Hawaiian. The name perfectly suits our indoor wedding chapel. It has perfect view of Haleakala, the south shores and the beautifully sculpted slopes of Mauna Kahalawai.

Breakfast Menus

Minimum order for 30 is required for all buffet menus.

Available from 8am to 12 Noon

Continental Breakfast Buffet \$18.95

- ❖ Pineapple, Guava and Orange Juices
- ❖ Sliced Seasonal Fruit
- ❖ Fresh Baked Croissants
- ❖ Variety of Danishes
- ❖ Hawaiian Isle Kona Coffee and Flavored Hot Teas

The King's Breakfast Buffet \$28.95

- ❖ Pineapple, Guava and Orange Juices
- ❖ Sliced Seasonal Fruit
- ❖ Salsa Fresca and Cheddar Cheese Frittata
- ❖ Apple-wood Smoked Bacon
- ❖ Island Portuguese Sausage
- ❖ Baby Russet Breakfast Potatoes
- ❖ Fresh Baked Croissants
- ❖ Hawaiian Isle Kona Coffee and Flavored Hot Teas

Plated Breakfast Entrées

Plated Breakfast Entrées Include:

- ❖ Pineapple, Guava and Orange Juice
- ❖ Sliced Seasonal Fruit
- ❖ Hawaiian Island Kona Coffee and Flavored Hot Teas

- ❖ Eggs Benedict & Fresh Spinach, Hollandaise & Hash Brown Potatoes \$30.00

- ❖ Scrambled Eggs & Fried Rice with a choice of Portuguese Sausage, Bacon or Ham \$30.00

- ❖ Lox and Bagels with Condiments \$30.00

Meeting Snacks

Available All Day – Splitting up the serving times may result in additional fee.

Olakino Snack \$14.95

- ❖ Sliced Seasonal Fruit
- ❖ Oatmeal Cookies
- ❖ Granola Bars
- ❖ Hawaiian Island Coffee
- ❖ Iced Tea

Ono Snack \$14.95

- ❖ Whole Fruit
- ❖ Bag of Chips
- ❖ Granola Bars
- ❖ Hawaiian Island Coffee
- ❖ Sodas

Lunch Buffets

Minimum order for 30 is required for all buffet menus.

Available 10am to 2pm

Wailuku Lunch Buffet

\$31.95

Salads

- ❖ Organic Upcountry Baby Greens with Chef's Choice of Dressings
- ❖ Creamy Pineapple Cole Slaw
- ❖ Russet Potato Salad

Sandwiches

- ❖ Deli Sliced Turkey, Roast Beef*, Ham and Tuna Salad
- ❖ Assorted Sliced Cheeses
- ❖ Assorted Fresh Baked Breads and Rolls
- ❖ Sandwich Condiments

Dessert

- ❖ Homemade Fudge Brownies
- ❖ Assorted Fresh Baked Cookies
- ❖ Iced Tea

Waikapu Lunch Buffet

\$37.95

Salads

- ❖ Organic Upcountry Baby Greens with Chef's Choice of Dressings
- ❖ Curried Sugar Snap Peas and Toasted Cashews
- ❖ Asian Somen Noodles

Entrées

- ❖ Vegetable Stir Fry
- ❖ Oyster Beef with Mushroom and Onions
- ❖ Sautéed Mahi-mahi Beurre Blanc with Lemon Capers
- ❖ Slowed Roasted Pork Loin and Homemade Pan Gravy
- ❖ Steamed White Rice
- ❖ Fresh Baked Rolls

Desserts

- ❖ Homemade Fudge Brownies
- ❖ Assorted Fresh Baked Cookies
- ❖ Iced Tea

Waiehu Lunch Buffet

\$38.95

Salads

- ❖ Organic Upcountry Baby Greens with Chef's Choice of Dressings
- ❖ Vine-Ripened Cherry Tomatoes, Maui Onions and Homegrown Waikapu Basil
- ❖ Bowtie Pasta, Fresh Julienne Veggie Strips and Extra Virgin Olive Oil

Entrées

- ❖ Broiled Italian Seasoned Chicken
- ❖ Pot Roast with Carrots and Potatoes
- ❖ Herb Crusted Mahi-mahi
- ❖ Steamed White Rice
- ❖ Fresh Baked Rolls

Dessert

- ❖ Decadent Chocolate Cake
- ❖ Iced Tea

Waihee Lunch Buffet

\$40.95

Salads

- ❖ Organic Upcountry Baby Greens with Chef's Choice of Dressings
- ❖ Baked Potato Salad with Sour Cream and Bacon Bits
- ❖ Medley of Marinated Artichoke and Fresh Vegetables

Entrées

- ❖ Teriyaki Beef
- ❖ Grilled Chicken in Huli-Huli Sauce
- ❖ Seared Hawaiian Snapper with Pineapple Salsa
- ❖ Steamed White Rice
- ❖ Fresh Baked Rolls

Desserts

- ❖ Decadent Chocolate Cake
- ❖ Iced Tea

Plated Lunch

Prices listed below are per person.

Please choose a minimum of three (3) of the following courses:

| | |
|---|----------------|
| Soups | \$8.95 |
| ❖ Garden Fresh Chilled Gazpacho | |
| ❖ Creamy Haiku Tomato Bisque | |
| ❖ French Maui Onion Soup | |
| Salads | \$10.95 |
| ❖ Mediterranean Greek Salad | |
| ❖ Upcountry Greens with Cucumber and Shaved Maui Onions with Chef's Choice of Dressings | |
| ❖ Caesar Salad with Herb Croutons and Parmesan Cheese | |
| Ali'i Salads | \$22.95 |
| ❖ Traditional Caesar Salads with Choice of Seared Hawaiian Ahi*, Poached Tiger Shrimp or Grilled Boneless Chicken | |
| ❖ Original Chef Salad | |
| ❖ Hoisin Chicken Salad – Kula Greens with Oriental Noodles and Snap Peas | |
| Sandwiches | \$22.95 |
| ❖ Grilled Volcano Spiced Chicken on Ciabatta | |
| ❖ Island Fresh Fish with Homemade Tartar on a Whole Wheat Hoagie | |
| ❖ Sandwiches Served with Potato Chips | |
| Specialty Entrées | \$30.95 |
| ❖ Wok Seared Wild Alaskan Salmon with Tomato Compote | |
| ❖ Macadamia Nut Crusted Chicken Breast and Maple Cream | |
| ❖ Crusted Fresh Herb Panko Mahi-mahi with Cilantro Beurre Blanc | |
| ❖ Sirloin of Beef Brochette, Porcini Mushrooms and Kula Onions with Shoyu Ginger Glaze | |
| ❖ Grilled Napoleon with Portobello Mushroom, Eggplant, Zucchini and Provolone | |
| Entrées Include | |
| ❖ Chef's Choice of Fresh Vegetables | |
| ❖ Guests Choice of One of the following: White Rice, Brown Rice, Yukon Mashed Potatoes or Creamy Polenta | |
| Desserts | \$10.95 |
| ❖ Raspberry Cheesecake | |
| ❖ Dark Chocolate Mousse Cake | |
| ❖ Key Lime Cream Bistro Cake | |

**Consuming raw or undercooked meats, poultry, seafood, shellfish, or eggs may increase your risk of foodborne illness, especially if you have certain medical conditions.*

Prices in effect from 01/15/17 to 12/31/17 and subject to change without notice. Additional 22% Service Charge and 4.166% Hawaii State Tax added to entire bill. Service Charge includes a 4.5% Administrative Fee.

Additional Fees

- ❖ Hawaiian Isle Kona Coffee and Flavored Hot Tea Station **\$2/person or \$60 minimum**
- ❖ Upgrade to Brown Rice **\$2/person**
- ❖ Upgrade to Hapa Rice (Mix of Brown and White) **\$1/person**

Dessert Substitutions

- ❖ Decadent Chocolate Cake
- ❖ Vanilla Sheet Cake
- ❖ Carrot Cake
- ❖ Coconut-Banana Cake
- ❖ Assorted Fresh Baked Cookies
- ❖ Homemade Fudge Brownies
- ❖ Assorted Pies

Upgraded Desserts

Priced Per Piece, 20 Piece Minimum Per Order

- ❖ Chocolate Dipped Cream Puff **\$3.00**
- ❖ Lemon Cake Pop **\$3.50**
- ❖ German Chocolate Cake Pop **\$3.50**
- ❖ Red Velvet Cake Pop **\$3.50**
- ❖ Mint Lemonade Bar **\$3.00**
- ❖ Caramelized Pineapple Coconut Bar **\$3.00**
- ❖ Flourless Hazelnut Chocolate Bar (Gluten Free) **\$3.00**

Upgraded Dessert Platter

- ❖ Variety of Petit Fours (192 pieces) **\$355.00**

Appetizer Buffets

Minimum order for 30 is required for all buffet menus.

Pupu Buffet Special – Offered only with Lunch or Dinner Buffets **\$21.95**

- ❖ Vegetable Spring Rolls with Sweet Thai Basil and Chili Dip (2pc)
- ❖ Crispy Shrimp and Zesty Cocktail Sauce (2pc)
- ❖ Spicy Buffalo Wings with Cool Ranch Dressing (2pc)
- ❖ Garden Fresh Vegetable Crudit  with Ginger-Chili Cream (2pc)

Eurasian Pupu Buffet **\$33.95**

- ❖ Sliced Seasonal and Island Fruit
- ❖ Garden Fresh Vegetable Crudit  with Maui Onion Dip
- ❖ Coconut Shrimp and Upcountry Orange Marmalade (2pp)
- ❖ Roasted Bruschetta with Garlic Cream & Italian Salsa (2pc)
- ❖ Stuffed Mushroom Caps with Minced Pork and Scallions (2pp)
- ❖ Beef Satay (2pp)

Pacific Rim Pupu Buffet **\$37.95**

- ❖ Hawaiian Ahi Poke*
- ❖ Assorted Maki Sushi* (2pp)
- ❖ Steamed Dim Sum (2pp)
- ❖ Crispy Pot Stickers (2pp)
- ❖ Chicken Yakitori (2pp)
- ❖ Crab Cakes with Lilikoi Aioli (2pp)

Ali'i Pupu Buffet **\$48.95**

- ❖ Domestic and Imported Cheese Display with Crackers and Sliced Baguette
- ❖ Artichoke Fritter with Spicy Chili B arnaise (2pp)
- ❖ Chilled Prawns and Zesty Cocktail Sauce (3pp)
- ❖ Seared Jumbo Scallops with Pesto Cream (2pp)
- ❖ Grilled Lamb Chops with Waikapu Mint Demi-Glaze (2pp)
- ❖ Beef Medallions with Wild Mushroom Ragout* (2pp)

Carved Appetizer Platters

Served with Fresh Baked Rolls and Traditional Condiments,
\$150 Charge for each Carving Station, Chef Attendant Fee

- ❖ Roasted Peppered Strip Loin of Beef B arnaise Sauce* (Serves 50 Guests) **\$650.00**
- ❖ Prime Rib of Beef* (Serves 50 Guests) **\$680.00**
- ❖ Steamship Round of Beef* (Serves 120 Guests) **\$1200.00**
- ❖ Roast Turkey (Serves 40 Guests) **\$380.00**
- ❖ Roasted Whole Pig (Approximately 70 lbs. Serves 100 Guests) **\$2000.00**
- ❖ Oven Roasted Filet Mignon, Mushroom Ragout & B arnaise Sauce* (Serves 20 Guests) **\$500.00**

Chilled Appetizer Platters

Serves 50 Guests

| | |
|--|----------|
| ❖ Fresh Seasonal Fruits with Lilikoi Crème Anglaise | \$250.00 |
| ❖ Garden Fresh Vegetable Crudit  with Ginger-Chili Cream | \$250.00 |
| ❖ Double Cream Baked Brie with Caramelized Macadamia Nuts | \$480.00 |
| ❖ Domestic and Imported Cheese Display with Crackers and Baguettes | \$480.00 |
| ❖ Fresh Ahi Poke, Maui Onions, Haiku Tomatoes, Scallions and Ogo* | \$380.00 |

Chilled Appetizers Ala Carte

Priced Per Piece, 50 Piece Minimum Per Order

| | |
|---|--------|
| ❖ Roasted Bruschetta with Garlic Cream & Italian Salsa | \$3.50 |
| ❖ Chilled Jumbo Prawns and Zesty Cocktail Sauce | \$4.00 |
| ❖ Maki Sushi* | \$4.00 |
| ❖ Smoked Salmon Rose with Cream Cheese, Capers & Red Onions | \$4.00 |
| ❖ Seared Hawaiian Ahi with Wasabi Aioli on Toasted Rye* | \$4.00 |
| ❖ Curried Petite Shrimp on Cucumber Round | \$4.00 |
| ❖ Kula Strawberries and Brie on Toasted Rye | \$4.00 |
| ❖ Fresh Pacific Northwest Oysters on-the-Half-Shell | \$5.00 |
| ❖ Assorted Nigiri Sushi* | \$5.00 |
| ❖ Pacific Northwest Crab Claws | \$4.75 |

Butler Passed Hors D'oeuvres is an additional \$.50 per piece

Hot Appetizers Ala Carte

Priced Per Piece, 50 Piece Minimum Per Order

| | |
|---|--------|
| ❖ Original Singapore Chicken Satay with Peanut Sauce | \$3.50 |
| ❖ Artichoke Fritter with Spicy Chili B arnaise | \$3.25 |
| ❖ Mushrooms Stuffed with Roasted Vegetables and Parmesan Cheese | \$3.50 |
| ❖ Spicy Buffalo Wings with Cool Ranch Dressing | \$3.50 |
| ❖ Roasted Pork Tenderloin with Marsala Drizzle | \$3.50 |
| ❖ Crispy Pork Lumpia | \$3.50 |
| ❖ Teriyaki Beef Yakitori* | \$4.00 |
| ❖ Crab Cakes with Lilikoi Aioli | \$4.00 |
| ❖ Coconut Shrimp with Upcountry Orange Marmalade | \$4.00 |
| ❖ Vegetable Spring Rolls and Sweet Thai Chili Dip | \$3.50 |
| ❖ Volcano Spiced Pacific Scallops with Citrus Beurre Blanc | \$3.75 |

Butler Passed Hors D'oeuvres is an additional \$.50 per piece

Dinner Buffets

Minimum order for 30 is required for all buffet menus.

Punahele Dinner Buffet

\$48.95

Salads

- ❖ Organic Upcountry Baby Greens with Chef's Choice of Dressings
- ❖ Curried Peas and Toasted Cashews
- ❖ Asian Somen Noodle

Entrées

- ❖ Teriyaki Braised Short Ribs
- ❖ Macadamia Nut Mahi-mahi
- ❖ Oven Roasted Pork Loin with Maui Onion Au Jus
- ❖ Roasted Breast of Chicken with Tomato and Waikapu Herb Au Jus
- ❖ Sautéed Garden Fresh Vegetables
- ❖ Steamed White Rice

Desserts

- ❖ Assorted Pies
- ❖ Hawaiian Isle Kona Coffee and Flavored Hot Teas

Luau Dinner Buffet

\$44.95

Salads

- ❖ Organic Upcountry Baby Greens with Chef's Choice of Dressings
- ❖ Hawaiian Lomilomi Salmon
- ❖ Artichoke Heart Salad
- ❖ Island-Style Macaroni

Entrées

- ❖ Teriyaki Steak Garnished with Crispy Maui Onions*
- ❖ Ti Leaf Steamed Pork, Traditional Hawaiian Seasoning with Wilted Won Bok Cabbage
- ❖ Smokey Huluhuli Chicken
- ❖ Sautéed Fresh Fish with Coconut Crème and Mango Papaya Relish
- ❖ Sweet Molokai Potatoes with Coconut Glaze
- ❖ Steamed White Rice
- ❖ Fresh Baked Taro Rolls

Desserts

- ❖ Assorted Pies
- ❖ Hawaiian Isle Kona Coffee and Flavored Hot Teas

Hale Mahina Dinner Buffet

\$45.95

Salads

- ❖ Mixed Mizuna Greens with Chef's Choice of Dressings
- ❖ Chuka Soba Somen Noodle and Chinese Won Bok
- ❖ Sugar Snap Peas, Bamboo Shoots and Water Chestnuts with Thai Chili Vinaigrette

Entrées

- ❖ Stir Fry Beef with Bell Peppers and Onions*
- ❖ Steamed Snapper with Sweet Ginger Soy, Hot Sesame Oil Drizzle and Green Onion
- ❖ Roasted Pork Loin with Red Miso Broth and Black Beans
- ❖ Chinese Five-Spiced Roasted Duck with Orange Cinnamon Glaze
- ❖ Steamed White Rice
- ❖ Fresh Baked Rolls

Desserts

- ❖ Assorted Pies
- ❖ Hawaiian Isle Kona Coffee and Flavored Hot Teas

12

**Consuming raw or undercooked meats, poultry, seafood, shellfish, or eggs may increase your risk of foodborne illness, especially if you have certain medical conditions.*

Prices in effect from 01/15/17 to 12/31/17 and subject to change without notice. Additional 22% Service Charge and 4.166% Hawaii State Tax added to entire bill. Service Charge includes a 4.5% Administrative Fee.

Malihini Dinner Buffet

\$53.95

Salads

- ❖ Classic Caesar with Roasted Garlic Croutons
- ❖ Cherry Tomatoes, Fresh Mozzarella and Basil with Balsamic Vinaigrette

Entrées

- ❖ Garlic Herb Roasted Prime Rib of Beef, Homemade Au Jus and Horse Radish Cream*
- ❖ Oven Roasted Chicken with Haiku Tomato Coulis
- ❖ Sautéed Mahi-mahi with Citrus Beurre Blanc
- ❖ Sautéed Kula Vegetables
- ❖ Garlic Mashed Potatoes
- ❖ Steamed White Rice
- ❖ Fresh Baked Rolls

Desserts

- ❖ Assorted Pies
- ❖ Hawaiian Isle Kona Coffee and Flavored Hot Teas

Haleakala Dinner Buffet

\$52.95

Salads

- ❖ Classic Caesar with Roasted Garlic Croutons
- ❖ Artichoke Salad
- ❖ Tri Colored Fusilli Pasta

Entrées

- ❖ Pepper Crusted New York Steak with Caramelized Shallot Au Jus*
- ❖ Cornish Game Hen and Organic Apple Glaze
- ❖ Sesame Crusted Fresh Mahi-mahi with Fresh Mint Beurre Blanc
- ❖ Sautéed Medley of Zucchini and Gold Bar Squash with Julienne Haiku Tomatoes
- ❖ Horseradish Mashed Potatoes
- ❖ Steamed White Rice
- ❖ Fresh Baked Rolls

Desserts

- ❖ Assorted Pies
- ❖ Hawaiian Isle Kona Coffee and Flavored Hot Teas

Moana Dinner Buffet

\$55.95

Salads

- ❖ Bouquet of Mescaline Spring Mix with Chef's Choice of Dressings
- ❖ Cherry Tomatoes, Fresh Mozzarella and Waikapu Basil with Balsamic Vinaigrette
- ❖ Tricolor Fusilli and Artichoke Salad

Entrées

- ❖ Carved Prime Rib of Beef, Homemade Au Jus and Horse Radish Cream*
- ❖ Macadamia Nut Chicken Beurre Noisette
- ❖ Wok Seared Alaskan Salmon with Olive Oil Tomato Compote
- ❖ Sautéed Kula Vegetables
- ❖ Steamed White Rice
- ❖ Fresh Baked Rolls

Desserts

- ❖ Assorted Pies
- ❖ Hawaiian Isle Kona Coffee and Flavored Hot Teas

Plated Dinner

Please choose a minimum of three (3) of the following courses:

| | |
|---|---------------------|
| Appetizers | \$12.95 |
| ❖ Seared Rosemary Skewered Jumbo Shrimp with Sherry Vinaigrette | |
| ❖ Crab Cakes with Curried Cream and Sweet Thai Chili | |
| ❖ Scallops and Wilted Spinach Saffron Aioli | |
| ❖ Sautéed Gyoza and Water Cress with Sweet Shoyu Beurre Blanc | |
| Soups | \$12.95 |
| ❖ Pacific Lobster Bisque | |
| ❖ Baked Maui Onion Soup with Gruyere and Provolone Cheeses | |
| ❖ Maalaea Seafood Chowder | |
| ❖ Cream of Wild Mushroom | |
| Salads | \$14.95 |
| ❖ Organic Upcountry Baby Greens with Fresh Orange Mirin Vinaigrette | |
| ❖ Heart of Romaine, Kalamata Olives, Crumbled Feta Cheese, Cucumbers, Haiku Tomatoes, and Fresh Herb Vinaigrette. | |
| ❖ Haiku Tomatoes and Fresh Mozzarella with Homegrown Waikapu Basil and Extra-Virgin Olive Oil and Balsamic Syrup Drizzle | |
| Island Entrées | |
| ❖ Macadamia Nut Crusted Boneless Chicken Breast with Beurre Noisette, Sautéed Haricot Verts and Jasmine Rice | \$39.95 |
| ❖ Roasted Choice Strip Loin of Beef, Beurre Rouge, Grilled Garden Vegetables and Waikapu Herb Roasted Potatoes* | \$46.95 |
| ❖ Filet Mignon with Shitake Mushroom Stew, Pinot Noir Reduction with Fresh Asparagus Spears and Whipped Yukon Gold Potatoes* | \$53.95 |
| ❖ Maui Onion Crusted Rack of Lamb with Lahaina Mango Chutney, Kula Vegetables and Garlic Mashed Potatoes | \$55.95 |
| ❖ Pan Seared Veal Chops and Portobello Mushrooms, Chef's Vegetable Du Jour, Marsala Demi Glaze and Maui Onion Potato Cakes | \$62.95 |
| Ocean Entrées | |
| ❖ Steamed Fresh Opakapaka with Ginger, Cilantro and Shitake Mushrooms Served with Stir-Fried Rice | \$50.95 |
| ❖ Big Island Macadamia Nut Crusted Fresh Island Mahi-mahi with Kiffer Lime Beurre Blanc and Wild Rice | \$46.95 |
| ❖ Volcano Spiced Jumbo Shrimp, Rice Pilaf and Saffron Butter | \$43.95 |
| ❖ Baked Pacific Lobster Tail with Angel Hair Pasta, Sautéed Kula Vegetables and Drawn Butter | Market Price |
| Ocean – Island Combinations | |
| ❖ Grilled Filet Mignon and Baked Lobster Tail* | Market Price |
| ❖ Grilled Filet Mignon and Jumbo Shrimp Scampi* | \$61.95 |
| ❖ Grilled Filet Mignon and Macadamia Nut Crusted Fresh Island Fish Served with Horse Radish Mashed Potatoes and Chef's Vegetable Du Jour* | \$61.95 |

**Consuming raw or undercooked meats, poultry, seafood, shellfish, or eggs may increase your risk of foodborne illness, especially if you have certain medical conditions.*

Vegetarian Selections

- ❖ Roasted Vegetable Napoleon and Tomato Herb Coulis with Steamed Brown Rice **\$37.00**
- ❖ Medallions of Roasted Eggplant, Maui Onions and Portabella Mushrooms with Garlic Risotto **\$37.00**
- ❖ Grilled Kula Vegetables with Penne Pasta and Homemade Marinara Sauce **\$37.00**

Desserts

\$12.95

- ❖ New York Cheesecake with Lilikoi Drizzle
- ❖ Key Lime Tart
- ❖ Triple Chocolate Mousse Cake; Dark, Milk & White Chocolate Layers
- ❖ Flourless Chocolate Torte (Gluten Free)

Audio, Visual & Equipment Rental

- ❖ Podium Only..... **No Fee**
- ❖ Podium with Cordless Microphone in Waikapu Room..... **No Fee**
- ❖ Podium with Wired Microphone in any other room requires P.A..... **\$75**
- ❖ Portable P.A. System with one Microphone..... **\$75**
- ❖ Wireless Hand held or Lapel Lavalier Microphone..... **\$50**
- ❖ Portable Screen..... **\$65**
- ❖ 60" Flat Screen T.V. Monitor..... **\$250**
- ❖ LCD Projector 200 Lumen, XGA..... **\$150**
- ❖ Overhead Projector..... **\$45**
- ❖ DVD Player..... **\$50**
- ❖ Wireless Internet Service..... **No Fee**
- ❖ Easel..... **\$15**
- ❖ Riser (6'x8'x8")..... **\$50**
- ❖ Standard Wooden Dance Floor..... **\$250**
- ❖ Verizon Jet Pack, up to 4 hours..... **\$50**

Specialty Rental Items

Delivery fee will be added

- ❖ Chiavari Chairs..... **\$9.95ea**
- ❖ White Padded Folding Chairs..... **\$5ea**
- ❖ White Lattice Arch..... **\$120**
- ❖ Bamboo Chuppah/Arch with cloth..... **\$160**
- ❖ Chair Covers..... **Varies**
- ❖ Custom Linen..... **Varies**

House Linens
No Fee with Event Booked



130" Rounds (for 72" round tables)

- ❖ White
- ❖ Ivory

90'x90' Overlays

- ❖ White
- ❖ Ivory
- ❖ Black

Napkins (as shown in image, above)

- ❖ Red
- ❖ Burgundy
- ❖ Black
- ❖ White
- ❖ Ivory
- ❖ Seafoam Green
- ❖ Teal
- ❖ Royal Blue

120"x60" Linens (for classroom and rectangle banquet tables)

- ❖ White
- ❖ Ivory
- ❖ Black
- ❖ Beige

Skirting

- ❖ White
- ❖ Ivory
- ❖ Black
- ❖ Teal
- ❖ Burgundy

Cake Vendors

The following Cake Vendors have been approved by and insured with The King Kamehameha Golf Club & Kahili Golf Course. If you would like to order a specialty cake for your wedding, birthday, etc. please order it through one of our vendors. The vendor will bill The King Kamehameha Golf Club/Kahili Golf Course directly. The price of the order will be added to your Event Order. A 22% Service Charge and 4.166% Hawai'i State Tax will be added so that we can serve the cake to you and your guests. If a cake is brought in, that did not come from one of our vendors, we will happily display it. However, the cake will not be served.

Maui Cakes

<http://www.mauicakes.com>

(808) 276-2110

Cake Fanatics

<http://www.cakefanaticsmaui.com>

(808) 214-7767

Maui Wedding Cakes

<http://www.mauiweddingcakes.com/>

(808) 874-5932

Cupcake Ladies Catering

<http://www.CupcakeLadiesHI.com>

(808) 280-0574

Cravings Bakery

<http://www.cravingshawaii.com>

(808) 357-4097

Cake Pops by Liz

<http://www.cakepopsbyliz.com/>

(808) 283-8806

Any cake ordered through our vendors will be delivered by the vendor to the event facility. Any deposit fee needed by the vendor will be billed directly to The King Kamehameha Golf Club/Kahili Golf Course.



Maui Cakes



Cake Fanatics



Cravings Bakery



Maui Wedding Cakes



Cake Pops by Liz



Cupcake Ladies Catering

**Consuming raw or undercooked meats, poultry, seafood, shellfish, or eggs may increase your risk of foodborne illness, especially if you have certain medical conditions.*

Prices in effect from 01/15/17 to 12/31/17 and subject to change without notice. Additional 22% Service Charge and 4.166% Hawaii State Tax added to entire bill. Service Charge includes a 4.5% Administrative Fee.

Beverage Menus

Based on Availability

Well Cocktails

| | | |
|---------------------------|---------------------------|------------------|
| Pau Vodka | Gordons Gin | Rico Bay Rum |
| Whalers Original Dark Rum | Sauza Giro Tequila | Jim Beam Bourbon |
| Canadian Club Whiskey | Christian Brothers Brandy | Scoresby Scotch |
| Dekuyper Triple Sec | | |

Premium Cocktails

| | | |
|-----------------|---------------------------|-------------------------------------|
| Titos Vodka | Captain Morgan Spiced Rum | Tanqueray Gin |
| Meyers Dark Rum | Parrot Bay Coconut Rum | Bacardi Superior Rum |
| J&B Scotch | Jack Daniels Whiskey | Jose Cuervo Especial Silver Tequila |

Platinum Cocktails

| | | |
|------------------------|---------------------|----------------------------|
| Ketel One Citron Vodka | Ocean Vodka | Makers Mark Bourbon |
| Ketel One Vodka | Bombay Sapphire Gin | Dewar's White Label Scotch |
| Crown Royal Whiskey | Courvoisier Cognac | Herradura Silver Tequila |
| Gentleman's Jack | | |

Cordials

| | | |
|---------------------|----------------------|---------------|
| Amaretto di Saronno | Bailey's Irish Cream | Chambord |
| Cointreau | Frangelico | Grand Mariner |
| Kahlua | Midori | |

Superior Cocktails

| | | |
|---------------------|-------------------------|-----------------------|
| Grey Goose Vodka | Glenlivet Scotch 12 yr. | Patron Silver Tequila |
| Chivas Regal Scotch | Remy VSOP Cognac | Hendricks Gin |

House Wine (5oz)

| | | |
|-----------------------------|--|------------------------------|
| Ruffino Lumino Pinot Grigio | Charles & Charles CV Rose | Chateau Ste Michele Riesling |
| Hidden Crush Chardonnay | Consentino Zin | Avalon Cabernet |
| Velvet Devil Merlot | Robert Mondavi Private Select Pinot Noir | |

Wine Upgrade (5oz)

| | | |
|---------------------|----------------------------|------------------|
| Capture Sauv Blanc | SLH Hahn Chardonnay | Saint M Riesling |
| Josh Cellars Merlot | J. Lohr Cabernet Sauvignon | Meomi Pinot Noir |
| Donna Paula Malbec | | |

Wine Premium

| | | |
|-----------------------|---------------------|-------------------|
| Hanaiali'i Chardonnay | Lincourt Pinot Noir | Hanaiali'i Merlot |
|-----------------------|---------------------|-------------------|

Champagne/Sparkling Wines

| | | |
|--------------------------------------|--------------|------------------------|
| Blanc de Bleu Mondocino Sparkling NV | JCB Brut #21 | Cavit Lunetta Prosecco |
| Domaine Carnerous Sparkling | | |

Beverage Menus

Please note that all hosted beverages are subject to a
22% service charge and current sales tax.

| | <u>Hosted</u> | <u>No Host (cash bar)</u> |
|--------------------|---------------|---------------------------|
| Well Cocktails | \$4.75 | \$6.00 |
| Premium Cocktails | \$5.50 | \$7.00 |
| Platinum Cocktails | \$7.25 | \$9.00 |
| Cordials | \$7.25 | \$9.00 |
| Superior Cocktails | \$10.00 | \$12.00 |
| Domestic Beer | \$3.95 | \$5.00 |
| Imported Beer | \$4.75 | \$6.00 |
| Hawaiian Beer | \$4.75 | \$6.00 |
| Fresh Juices | \$3.00 | \$4.00 |
| Soft Drinks | \$2.00 | \$3.00 |
| Sparkling Water | \$2.00 | \$3.00 |
| Bottled Water | \$2.00 | \$3.00 |

| | <u>Starting at:</u> | |
|---|---------------------|---------|
| Wine by-the-glass | \$6.50 | \$8.00 |
| Upgraded Wine by-the-glass | \$8.50 | \$11.00 |
| Champagne by-the-glass | \$8.50 | \$11.00 |
| Premium Wine & Champagne by-the-bottle only | | |

MMK Maui L.P. offers an extensive wine list. Selection from our list shall be requested two (2) weeks prior to your event.

| | |
|--------------------------------|-------------------------------------|
| Domestic Beer ~ Full Keg | \$395.00 (approximately 160 drinks) |
| Imported Beer ~ Full Keg | \$475.00+ |
| Fruit Punch | \$35.00 per gallon |
| Coffee or Decaffeinated Coffee | \$2/person or minimum order of \$60 |
| Beverage Attendant | \$150/ 2 hours (table service) |

(Bartender fees are waived if the beverage revenue per bartender meets or exceeds \$600.00 per event, exclusive of tax and gratuities.)

The Hawaii State Department of Liquor Control regulates all alcoholic beverage sales and service within the County of Maui. MMK Maui L.P., as an authorized licensee, is held accountable for the supervision of such policies. For that reason, alcoholic beverages may not be brought onto the MMK Maui L.P. premises from outside sources. Please see booking contract for more information.

**Consuming raw or undercooked meats, poultry, seafood, shellfish, or eggs may increase your risk of foodborne illness, especially if you have certain medical conditions.*

Prices in effect from 01/15/17 to 12/31/17 and subject to change without notice. Additional 22% Service Charge and 4.166% Hawaii State Tax added to entire bill. Service Charge includes a 4.5% Administrative Fee.



GENERAL INFORMATION

MMK MAUI L.P.

THE KING KAMEHAMEHA GOLF CLUB

2500 Honoapi'ilani Highway • Wailuku, Maui, Hawaii 96793

KKGC Banquet Office: Ph. 808-243-1025 Fax 808-249-8786 banquet@kamehamehagolf.com

We are pleased that you have considered Our Facilities as the location for your special occasion and our staff is pleased to assist you in bringing your vision to reality.

If you are not using our onsite coordinating services then we request that there be one (1) designated contact person whom our management and Banquet Captain can approach with concerns and questions. In planning your event, please direct all inquiries or matters of concern to the Banquet and Catering Manager. The Banquet Captain will be your contact and oversee your function. Wedding coordinators and DJs are to follow the time line designated by the client, service and kitchen staff for food service.

The following guidelines shall apply to all events:

Food and Beverage

Food and Beverage requirements shall firmly be provided by MMK Maui L.P. Due to current health regulations, outside food or beverages of any kind shall not be permitted. Additionally, food and beverage may not be taken off the premises after it has been prepared and served, nor kept for a future event.

Wedding Cakes and cakes for special events can only be ordered from vendors that are on the Club's approved vendor list. Please see the banquet manager for a list of our approved cake vendors. Billing will go through the facility to which service charge and tax will be added.

The Hawaii State Department of Liquor Control regulates all alcoholic beverage sales and service within the County of Maui. MMK Maui L.P., as an authorized licensee, is held accountable for the supervision of such policies. For that reason, alcoholic beverages may not be brought onto the MMK Maui L.P. premises from outside sources. **Violation by Client or their guests may result in individual expulsion from the property, or early termination of the event. Client assumes all responsibility to notify guests of this policy prior to the event.**

In order to guarantee availability and price, your choice in menu & wine selection is due thirty (30) days prior to your function date. An MMK Maui L.P. event order shall be issued for all functions, and signature in acknowledgement of the arrangements contained therein will be required prior to the beginning of service. Substitutions due to dietary restrictions must be arranged a minimum of forty-eight (48) hours in advance.

A 22% service charge and 4.166% Hawaii State Tax shall be in addition to the price of your entire function agreed upon herein. The tax shall apply to the function provided for under Hawaii State Law. The service charge includes a 4.5% administrative fee.

Guarantee

An estimate of your anticipated function attendance shall be submitted thirty (30) days prior to the event. The final number of guests in attendance, which will be a minimum guarantee, shall be submitted by 12:00 noon, Ten (10) days prior to the commencement of the function, at the latest. Once the final count is given, this guarantee is not subject to reduction should less than the guaranteed count attend. Prices are subject to change without notice and we reserve the right to refuse service.

Deposit & Payments

20

**Consuming raw or undercooked meats, poultry, seafood, shellfish, or eggs may increase your risk of foodborne illness, especially if you have certain medical conditions.*

Prices in effect from 01/15/17 to 12/31/17 and subject to change without notice. Additional 22% Service Charge and 4.166% Hawaii State Tax added to entire bill. Service Charge includes a 4.5% Administrative Fee.

An initial \$700 deposit shall be required to confirm each event location. MMK Maui L.P. reserves the right to sell the space to another party unless this deposit is received. This deposit shall be applied to the function's final charges. Full payment must be received seven (7) days prior to the function date unless otherwise arranged in writing with the Banquet Manager. Non-Payment or delinquency may result in event cancellation. Any additional charges will be due at the conclusion of the event. Post billing for government agencies, non-profit and corporate groups can be facilitated through the Banquet Manager. Out of state checks accepted up to thirty (30) days prior to event. Local personal checks accepted up to seven (7) business days before event. Credit card may be required as security.

Cancellations

Cancellations in writing must be made sixty (60) days prior to the event to receive a refund of any payments made, less 10%. If a cancellation is received less than sixty (60) days prior to the confirmed function, all payments are non-refundable. All cancellations made within thirty (30) days of the function date will have a 100% percent penalty of estimated charges assessed. All estimated charges will be required. Any and all litigation and attorney's fees assessed for any and all business conducted with MMK Maui L.P. will be the responsibility of the client

Event & Entertainment

Function length shall be four hours. Late fees shall apply at the rate of \$750.00 per hour. MMK Maui L.P. reserves the right to monitor the volume of entertainment. Due to Maui County Liquor Laws, functions with minors in attendance must conclude by 10:00 PM.

Outside Vendors

A coordination/setup fee shall be assessed to the client should entertainment and/or a theme event decor be contracted directly by MMK Maui L.P. with an outside vendor. Any outside contracted services such as florists, entertainment, musicians, etc. are subject to approval from the Banquets and Catering Department. Proof of liability Insurance may be requested. Outside vendor charges arranged by the client shall not be the responsibility of MMK Maui L.P. Any structural additions must be contracted through MMK Maui L.P. On approval, outside vendors may briefly use the driveway entrance areas to ONLY unload supplies from their cars or vans. Refrain from parking vehicles directly in front of club pathways. Client is responsible to notify vendors of this policy. Repeated violation will result in rescinding this privilege. Ample parking is provided for guests and vendors in the main parking lots.

Set Up Policy

Two (2) hours of Client Set-up time is allowed per event. If circumstances allow, this time may be extended by the event manager as an addendum to this contract. If the agreed upon extension time is breached, client will be subject to additional set up charges at \$250.00 per hour. When these extensions are agreed upon, additional restrictions concerning contact with other personnel within the club not involved with this function will apply. Violation of these restrictions shall be considered a breach of extension time and will subject client to additional set-up fees. No floral construction will be allowed within the clubhouse. Violation will result in a minimum \$750.00 additional function fee and client may be subject to damage fees.

General Provisions

Performance of this agreement is contingent upon the ability of the MMK Maui L.P. Food & Beverage management to complete the same, and is subject to labor troubles, disputes or strikes, accidents, governmental (Federal, State or County) requisitions, restrictions upon travel, transportation, foods, beverages, supplies and/or other causes whether enumerated herein or not, beyond the control of management preventing or interfering with performance. In no event shall MMK Maui L.P. Food & Beverage be liable for the loss of profit, for other similar or dissimilar collateral or consequential damages, whether based on breach of contract, warranty or otherwise.

Liability

MMK Maui L.P. does not accept liability or responsibility for the damage, loss or theft of any merchandise, equipment or articles left in the premises prior to, during, or following the completion of your function. Clients agree to be responsible and reimburse MMK Maui L.P. for any loss or damages done by the client, the client's guests, or invitees. Any and all litigation and attorney's fees assessed for any and all business conducted with MMK Maui L.P. will be the responsibility of the client

Security

**Consuming raw or undercooked meats, poultry, seafood, shellfish, or eggs may increase your risk of foodborne illness, especially if you have certain medical conditions.*

Prices in effect from 01/15/17 to 12/31/17 and subject to change without notice. Additional 22% Service Charge and 4.166% Hawaii State Tax added to entire bill. Service Charge includes a 4.5% Administrative Fee.

Additional Security is mandatory for functions with 250 or more guests attending and parties involving minors. Security services shall be arranged and coordinated for an additional charge through MMK Maui L.P.

Signage

MMK Maui L.P. has both location signs and meeting room identification throughout the facilities. Posting signs at the four-way traffic stop entrance location is the responsibility of MMK Maui L.P. Signage within the different venues shall be professionally printed, and is restricted to the function space you have reserved; no signs are permitted in public areas. No balloons, homemade signage etc. is allowed on any roadway, including the highway. The name of Marilyn Monroe, Marilyn Monroe’s image or any other reference to Marilyn Monroe is prohibited without the permission of the Marilyn Monroe Foundation. Infringement use may be cause for litigation and fines by licensing agent, CMG Worldwide for the Marilyn Monroe Foundation.

All advertising done, promoting any event at The King Kamehameha Golf Course/The Kahili Golf Course must be approved by MMK Maui Executives before printing or displayed.

Decorations

In order to prevent damages to the fine fixtures and furnishings within our venues; all decorations and displays shall be approved prior to use in our meeting facilities. Use of staples, tape, nails, or any other adhesive materials are strictly forbidden and may not be used as an attachment to a stationary wall, floor, window or ceiling. Additional charges may be applied for any damages incurred to MMK Maui L.P. Property and general decor not removed at the conclusion of the event, i.e., glitter, confetti, balloons, signage, etc. Open flames are prohibited in any indoor facility. The use of scattering of rice and fake materials are forbidden on our outdoor facilities in order to protect the Hawaiian Nene that reside here. Entertainers, subcontractors and Production Companies shall abide by the above said conditions and are required to sign acceptance agreements of our guidelines. Floor plans drawn to scale and electrical requirements shall be submitted by Production Companies.

Permits

A permit is required for the following events: casino events, silent auctions, fashion shows, events for minors, events that exceed curfew and banquet events that are held on the outside premises. A \$50 processing fee for all permits will apply. The Hawaii Department of Liquor Control requires that all applications must be submitted no later than 10 working days prior to an event in order for the permit to be considered. M.M.K. Maui requires a minimum of 5 working days to turn in the application. Therefore all information must be submitted by the client to the M.M.K. Maui banquet department no later than 15 days prior to the event date. No exceptions will be made.

Event Details & Final Menu

Your finalized menu is due 30 days prior to your event date. Your floor plan and set-up details must be finalized at least 10 working days prior to your event date. There may be additional labor charges if you make changes to your floor plan and set-up details beyond the 10 days prior to your event.

HERE IS A LIST OF DUE DATES FOR YOUR CONVIENENCE:

- _____ 1 Month Prior (30 Days) ~ Finalized Menu is due.
- _____ 2 Weeks prior (14 days) ~ Schedule Wedding Ceremony Rehearsal if applicable.
- _____ 10 days prior ~ Final Guarantee is due. Set-up Details and Floor Plan must be finalized.
- _____ 7 days prior ~ Final Payment is due.

Contact Information

The King Kamehameha Golf Club & Kahili Golf Course
Phone: 808-243-1025
Fax: 808-249-8786
Email: banquet@kamehamehagolf.com
www.mauibanquets.com



**Consuming raw or undercooked meats, poultry, seafood, shellfish, or eggs may increase your risk of foodborne illness, especially if you have certain medical conditions.*