



An Urban Wedding

Sandbox events + collaboration

325 15th Street • San Diego, CA 92101

(619) 246-1122 • www.sandbox.co

Sandbox Weddings

Sandbox is located in sunny San Diego, in an historic downtown industrial warehouse. Your guests will be awed by the 80' skylight trimmed in market lights, barrel-vaulted ceiling and exposed brick. With 6,500 SF of wedding-ready space Sandbox easily adapts to your vision and caters to your needs. Bring your ideas to life at Sandbox. For more information, please contact us at info@sdbox.co.



Amenities

- ✓ Weddings, receptions + group events
- ✓ Onsite dressing suites, child care, coffee cart
- ✓ Wi-Fi, large projection screens, sound + AV
- ✓ Flexible curfew + no sound restrictions
- ✓ Handicap accessible
- ✓ Off-street, secure gated parking
- ✓ No vendor requirements
- ✓ Outdoor/indoor catering options
- ✓ Event planner + concierge on staff
- ✓ 200 amp electrical panel

Getting Here

Located downtown San Diego in the East Village, Sandbox is convenient to 3 major highways; five blocks from the famous Gas Lamp District; and 15 minute walk to the Convention Center. Jump on FRED (a free electric ride) to head to the Gas Lamp or Little Italy.

Sandbox events + collaboration

325 15th Street • San Diego, CA 92101
(619) 246-1122 • www.sdbox.co

Contact

Alex Georgescu, Partner
info@sdbox.co • (619) 246-1122

V01: 01/09/18



Vibe

Remnants of the building's art studio past mix with sunlight to create a relaxed, chill and creative environment. Buildings like this are rare: our guests always comment on its spaciousness, skylights and the street art murals (exterior); and we often find them having instagram-able moments. Your guests will leave with the feeling that anything is possible.



Neighborhood

Downtown's East Village neighborhood is a true mix of San Diego's thriving startup and artist communities. This up and coming urban, industrial neighborhood is reminiscent of Five Points (Denver), Chelsea (NYC), Wynwood (Miami). It makes for a nice escape from San Diego's heavily tourist-ed areas.



Sandbox events + collaboration

325 15th Street • San Diego, CA 92101
(619) 246-1122 • www.sandbox.co

Contact

Alex Georgescu, Partner
info@sandbox.co • (619) 246-1122

V01: 01/09/18



Bridal and Groom Suites

Sandbox offers separate spaces for both bride and groom to get ready, and retreat to during the festivities.



Childcare

Sandbox works with local kindergarten teachers to offer onsite daycare during your event.



Onsite Coffee Cart

Meka Coffee provides barista services to create those warm memories.



Onsite Parking

Sandbox has reserved parking perfect for bridal parties or your caterer's food truck and tent. Ask about availability and cost.



Vendors

There are no required vendors at Sandbox. We have vendor recommendations identified in every category that show up on time, do a phenomenal job.



Caterer Onsite Cooking

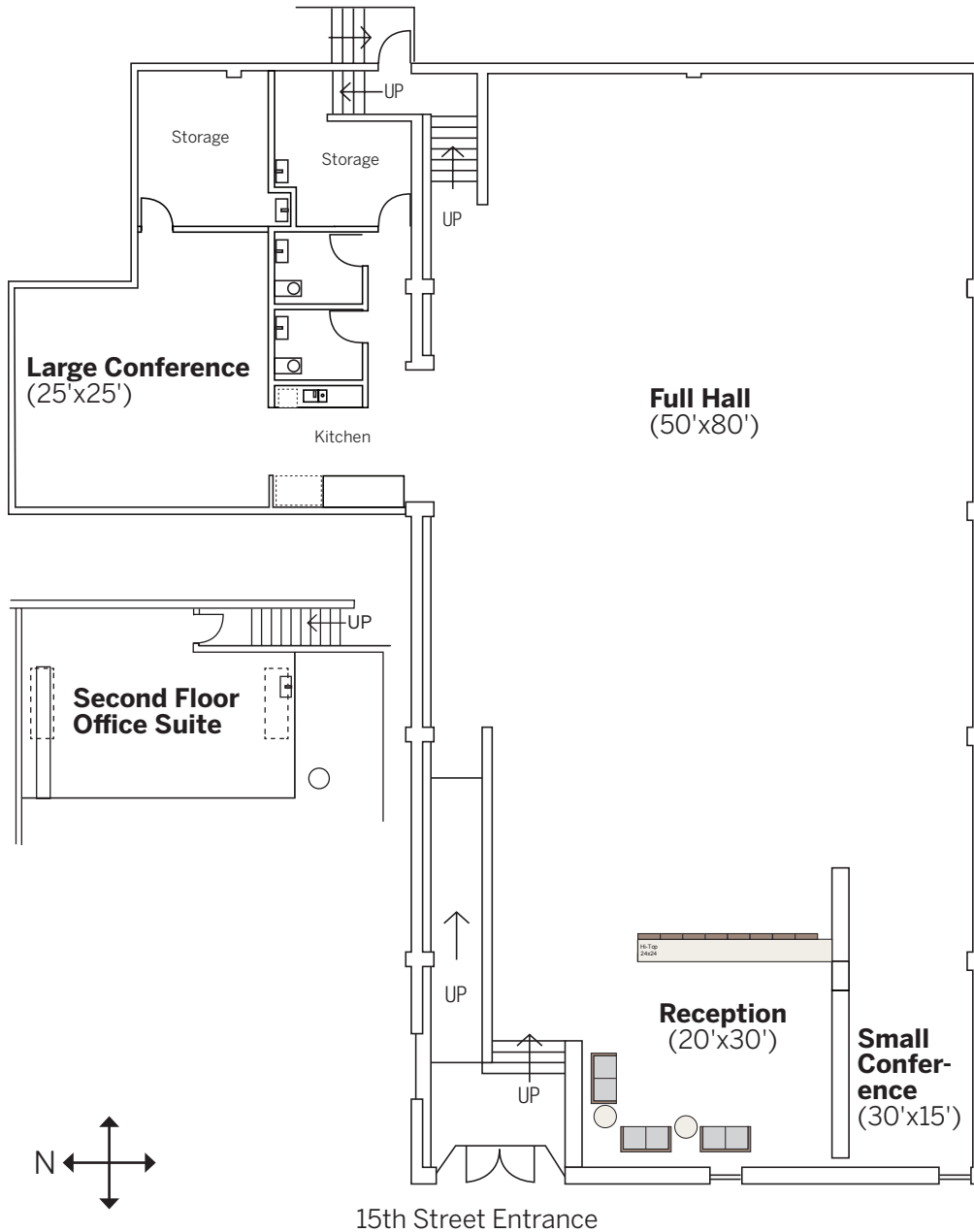
Our back lot also doubles as the caterers' preferred cooking area. They can park their trailers, put up a tent and service the party inside.

Sandbox events + collaboration

325 15th Street • San Diego, CA 92101
(619) 246-1122 • www.sandbox.co

Contact

Alex Georgescu, Partner
info@sandbox.co • (619) 246-1122



Layout

5,000 SF in the main hall

1,500 SF in adjacent spaces (conference + second floor suite)

Introductory Rate (8am-11pm)

Sun-Thur	\$3,500
Friday	\$4,500
Saturday	\$5,500
Holiday	\$6,500
Extra Hours as available	\$90/hr
Event Coordinator	\$1,500 day of event \$50/hr all other
Parking spots (limited tandem)	\$25/spot

Notes

- Pre- and post-event access to the facility is dependent upon availability, please plan ahead.
- Wedding coordinator required.
- Wedding introductory rate includes security guard at front entrance.
- If alcohol is present a licensed bartender and event permit is required; and the responsibility of the client.
- No required vendors for catering, alcohol or decorations, recommendations available. All vendors must be licensed and insured; and credit card on file with Sandbox.
- Vendors are required to remove all trash.

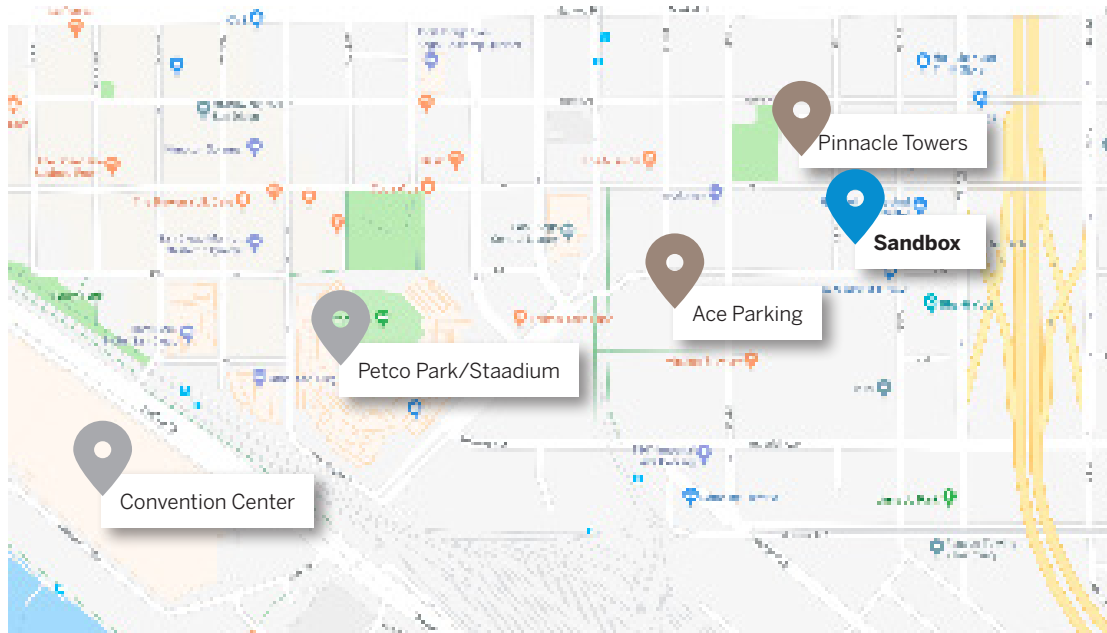
Sandbox events + collaboration

325 15th Street • San Diego, CA 92101
(619) 246-1122 • www.sandbox.co

Contact

Alex Georgescu, Partner
info@sandbox.co • (619) 246-1122

V01: 01/09/18



Onsite Parking

Onsite parking is available for clients of Sandbox. Ideal for event organizers and food trucks, these private tandem spots are accessed through a secure gate, and during events with valet. Guest parking is available at the Pinnacle Towers, where 90 spots cost between \$5 - 15 a day.

Onsite spots

Spots	Weekday: 10 tandem spots, or 2 food trucks Weekend: ask about availability
Cost	\$25/car \$250 for food trucks

Off-site parking

Pinnacle	\$5 - 15
Ace, 14th St Lot	\$8.75

Trains	The MTS Trolley stops at Imperial and Park/Market, both are equidistant to Sandbox. Trolley lines: Orange, Blue, Green
---------------	---

Directions

Address: 325 15th Street, San Diego, CA 92101
We are located between J and K streets

Coming from the East

From the 805 or 15
Exit onto CA 94 West
Move to far left lane after getting on the 94
Turn Left onto 15th Street

Coming from the South

Take the I5 North
Exit at 19th Street
Turn Left onto J Street
Turn Left onto 15th Street

Coming from the West

Take Market Street East
Turn Right onto 15th Street

Coming from the North

Take the I5 South
Exit at Imperial Avenue
Turn Right onto Imperial Avenue
Turn Right onto 16th Street
Turn Left on K Street
Turn Right onto 15th Street

Sandbox events + collaboration

325 15th Street • San Diego, CA 92101
(619) 246-1122 • www.sandbox.co

Contact

Alex Georgescu, Partner
info@sandbox.co • (619) 246-1122

Introductory Rates

Normal operation is 8am-9pm; please inquire about extra time for your event and celebrations. With no curfews or noise ordinances in the neighborhood we can be flexible with your booking and load-in and -out. Inquire about weekly or monthly rentals.

Experiences

The Full Venue Event or conference Does not include furniture, or upstairs office. Includes main hall, both conference rooms and reception area. 🏠 6,000 SF 🧑 150-250	\$2,000	Sun-Thurs ½ Day (4 Hours)
	\$3,500	Sun-Thurs (8 Hours)
	\$4,500	Friday (8 Hours)
	\$5,500	Saturday (8 Hours)
	\$6,500	Holidays (8 Hours)
Gallery Event	\$350	½ Day (4 hours)
	\$500	Sun-Thurs (8 Hours)
	\$800	Holidays (8 Hours)

Rooms

	M-F (8am or 1pm)	Holidays, Weekends	
Private Large Conference Room 🏠 450 SF 🧑 24	\$90		1 hr (90 min)
	\$275	\$320	½ Day (4 Hours)
	\$500	\$515	1 Day 8-5pm
Small Conference Room 🏠 270 SF 🧑 18	\$65		1 hr (90 min)
	\$150	\$175	½ Day (4 Hours)
	\$275	\$320	1 Day 8-5pm
Upstairs Private Meeting Room 🏠 570 SF 🧑 24	\$150		1 hr (90 min)
	\$450	\$450	½ Day (4 Hours)
	\$1,200	\$1,500	1 Day 8-5pm

Consider adding:

Reception area	\$90	90 minute hour
	\$200	½ Day (4 hours)
	\$400	8 Hours
Coffee cart	\$5/cup	+ \$30/hour
Cocktail mixer following your event	\$1,000 - 1,250	2 Hours after your scheduled event
Change fee	\$100	
Event coordinator fee	\$1,500	Day of event
	\$50	Hourly
Moderator	\$250	½ Day (4 hours)
	\$350	8 Hours
Parking	\$25	Per spot, limited spots available
	\$250	for 2 food trucks, no guest parking
	\$200	for valet, 4 hrs
Extra time to setup or breakdown	\$90	each hour, same day

Sandbox events + collaboration

325 15th Street • San Diego, CA 92101
(619) 246-1122 • www.sandbox.co

Contact

Alex Georgescu, Partner
info@sandbox.co • (619) 246-1122

V01: 01/09/18